

## The BBU at a glance:

352 member companies  
in Berlin-Brandenburg

1.1 million dwellings  
are owned and administered by our  
member companies

40% of rental housing stock  
in Berlin (approx. 700,000 dwellings)

50% of rental housing stock  
in Brandenburg (approx. 400,000 dwellings)

1.5 billion Euros  
invested yearly by member companies

4.6 billion Euros  
total annual turnover by member companies

over 44 billion Euros  
total investments of member companies  
(since 1991)

Photo: Berlin Senator of Urban Development Michael Müller, Berlin Governing Mayor  
Klaus Wowereit, former President of the Bundestag Prof. Dr. Rita Süßmuth and Brandenburg  
Minister of Infrastructure Jörg Vogelsänger visiting the BBU Association Convention



## A selection of important events:

Association conferences and expert discussions  
Conferences on current issues to promote the exchange of  
information and experiences between member companies

Working groups and expert commissions  
on a wide variety of topics such as legal issues, housing  
stock management and managerial accounting

BBU New Building Conferences  
Strategies and good practice for more and affordable  
new buildings in Berlin-Brandenburg

Association Convention  
For example: "The Housing Industry Force Field"  
with speaker Dr. Franz Alt

BBU Convention in Bad Saarow  
"Demography: Key factor for future planning", the largest  
professional housing industry convention in the region

Press conferences  
For example: Annual Berlin-Brandenburg press conferences,  
Market Monitor, BBU Price Database

Zukunft findet Stadt 3.0 (The future of the city 3.0)  
Cycle of debates on urban development in Berlin-  
Brandenburg

Gewohnt gut – Fit für die Zukunft  
(Good for living – Fit for the future)  
The BBU seal of quality, distributed monthly to acknow-  
ledge special residential projects

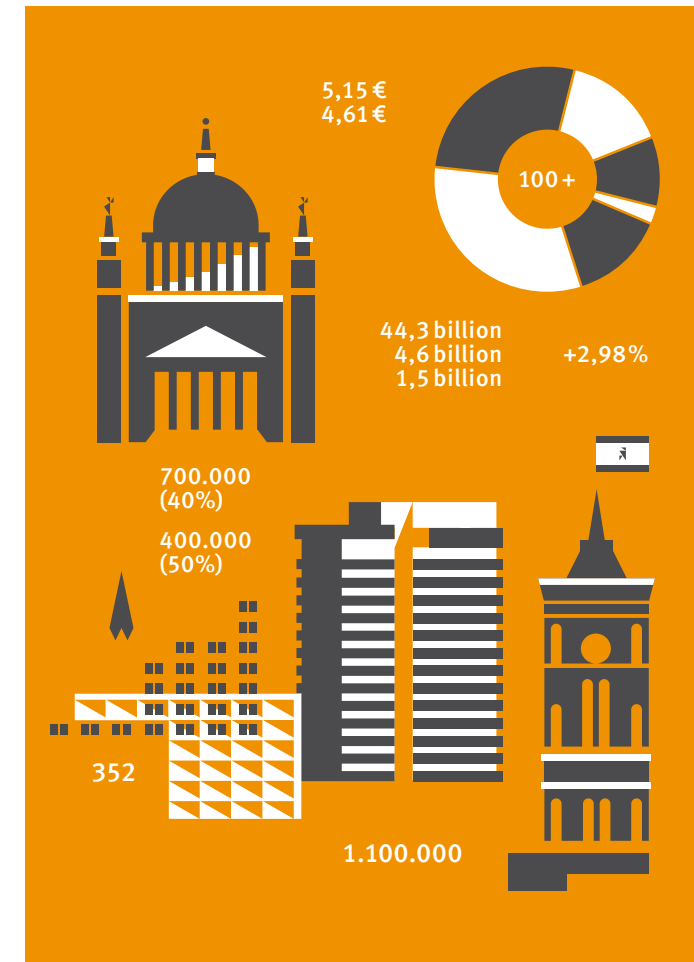


Member of the BBU  
Board of Directors  
Maren Kern  
Special Interest department



Member of the BBU  
Board of Directors  
Prof. Dr. Klaus-Peter Hillebrand  
Auditing and Taxes department

## BBU Verband Berlin-Brandenburgischer Wohnungsunternehmen e.V.



Who we are and what we do –  
introducing the BBU

# BBU Verband Berlin-Brandenburgischer Wohnungsunternehmen e.V.

## More than 115 years of commitment to the housing industry

The BBU Association of Housing Companies in Berlin-Brandenburg is the largest and oldest housing industry association in Eastern Germany. Our association, founded in 1897 and composed of **352 state-owned, municipal, cooperative, private and church-owned member companies** based in Berlin-Brandenburg, offers its members well-founded statistics, solid expert knowledge of the housing market and housing technology, and extensive, proven networks.

## Representation of interests, auditing, information, consulting

The BBU's work is based on two pillars. The first is to bundle and represent the interests of its members on the political stage, vis-à-vis the public authorities and in public opinion. The BBU offers its member companies expert knowledge and provides them with relevant information on a daily basis concerning the housing industry as a key sector of the economy. The second pillar of the BBU is its legally enshrined duty to serve as the auditing association for cooperative annual audits. With its subsidiaries and partner companies DOMUS AG, DOMUS Consult GmbH, BBT GmbH and BBA – Akademie der Immobilienwirtschaft e.V., Berlin, the BBU extends its portfolio to include the sectors of auditing, consulting and further education.



Photo: Panel discussion at the Friedrich-Ebert-Stiftung in Berlin

## Facts, time series and positions – a selection:

### Rents

Development of existing and newly contracted rent levels in Berlin-Brandenburg

### Market development

Vacancy in Berlin and in the cities of Brandenburg, tenant fluctuation, new building, investment, promotion concepts, market studies

### Urban development

Neighbourhood development, demography, socioeconomics

### Urban Restructuring in East Germany (State of Brandenburg)

Vacancy development, demolition figures, demography, projections

### Modernisation for energy efficiency

Current situation, measures, renewable energies, costs

### Operating costs and building stock management

Trends, development of prices and tariffs for energy, water and waste disposal

### Tenancy law, cooperative law

Tenancy law, evaluation of current court decisions on tenancy law, monitoring of legislative procedures

### Annual audits for cooperatives

Supportive audits: distinctive features and efficiency of the statutory cooperative audit

### Taxes

Up-to-date information, monitoring of legislative procedures

### Further topics

Housing for all ages, smoke detectors

## Informed diversity: The BBU publications

The BBU creates a range of its own publications, based as a rule on comprehensive surveys among its member companies. Some examples are:

### Market Monitor (yearly)

Rent and urban development thermometer for Berlin and Brandenburg (rents of existing and newly signed contracts, based on around 900,000 evaluated rental agreements).

### Annual Statistics (yearly)

Construction activity, investment, modernisation status of the building stock, rents, operating costs, building stock vacancies, fluctuation statistics, number of employed

### Price Database (yearly)

Development of prices and fees for energy, water and waste disposal in Berlin, Brandenburg and up to 19 German metropolises

### Legal Advice (quarterly)

Information on current developments and trends in legislation concerning the housing industry

### BBU News (every three weeks)

Current information, interviews and reports pertaining to the housing industry



ENTWICKLUNG DER PRIVATHAUSHALTE NACH HAUSHALTSGRÖSSEN im Land Brandenburg 2002 bis 2011

| Haushaltsgröße                | in 1.000 Personen |              |                |              |                |              |                |              |
|-------------------------------|-------------------|--------------|----------------|--------------|----------------|--------------|----------------|--------------|
|                               | 2002              |              | 2005           |              | 2008           |              | 2010           |              |
|                               | Anzahl            | %            | Anzahl         | %            | Anzahl         | %            | Anzahl         | %            |
| Einpersonenhaushalte          | 369,4             | 31,2         | 410,4          | 33,7         | 453,0          | 36,3         | 456,3          | 36,5         |
| Mehrpersonenhaushalte mit ... | 815,0             | 68,8         | 807,9          | 66,3         | 796,1          | 63,7         | 793,5          | 63,5         |
| 2                             | 430,4             | 36,3         | 453,6          | 37,2         | 470,4          | 37,7         | 484,4          | 38,8         |
| 3                             | 221,5             | 18,7         | 214,2          | 17,6         | 199,2          | 15,9         | 189,0          | 15,1         |
| 4                             | 131,8             | 11,1         | 116,2          | 9,5          | 102,2          | 8,2          | 97,6           | 7,8          |
| 5 und mehr                    | 31,3              | 2,6          | 23,9           | 2,0          | 24,2           | 1,9          | 22,5           | 1,8          |
| <b>Insgesamt</b>              | <b>1.184,4</b>    | <b>100,0</b> | <b>1.218,3</b> | <b>100,0</b> | <b>1.249,0</b> | <b>100,0</b> | <b>1.249,8</b> | <b>100,0</b> |
| Ø HHgröße                     | 2,18              |              | 2,09           |              | 2,02           |              | 2,00           | 1,97         |

Publisher: BBU Verband Berlin-Brandenburgischer Wohnungsunternehmen e.V. Lentzeallee 107, 14195 Berlin, E-Mail: info@bbu.de, Internet: www.bbu.de, Responsible editor: Dr. David Eberhart (v.i.S.d.P.), Photos: Mausolf, BBU/Bollhorst, FES